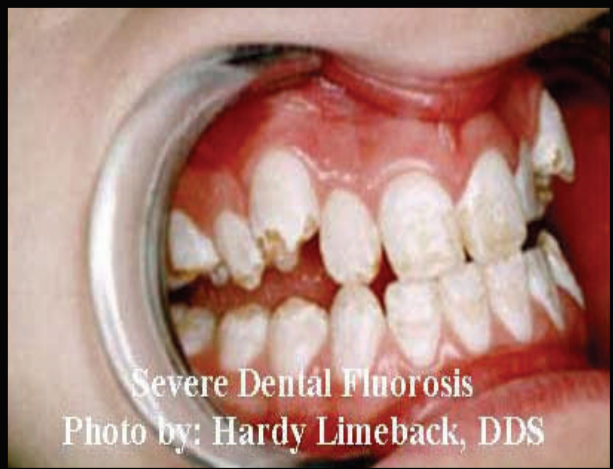


# Do You Have Unexplained White, Yellow, or Brown Spots on Your Teeth?



Teeth staining can be caused by ingesting too much of the chemical fluoride found in fluoridated city water and foods, toothpastes, and other sources. We invite you to learn how this affects yourself, your children, and loved ones. You may also be able to participate in possible upcoming fluoride legal actions and settlements. We are working to end harm from fluoridation, and for our research project **we would like to photograph your teeth if you have these types of stains!** Please visit our website or call us!

**The Lillie Center Inc. P.O. Box 839 Ellijay GA 30540**

**[www.spotsonmyteeth.com](http://www.spotsonmyteeth.com)**

**Phone: 706-669-0786 or Email: [dstockin@spotsonmyteeth.com](mailto:dstockin@spotsonmyteeth.com)**